

**YONGKANG AOYI INDUSTRY & TRADE CO., LTD**

LONGSHAN INDUSTRIAL ZONE, YONGKANG CITY, ZHEJIANG PROVINCE, CHINA

The following sample(s) was / were submitted and identified on behalf of the client. SGS is not responsible for the authenticity, integrity and results of the data and information and / or the validity of the conclusion. Results apply to the sample as received.

SGS Reference No.	NBHL1906010154SD
Sample Description	ALUMINIUM MULTI-PURPOSE LADDER
Style / Item No.	AY-605A
Country of Destination	DENMARK
Sample Receiving Date	JUN 19, 2019
Sample Re-submitted Date	JUL 25, 2019
Test Performing Date	JUN 19, 2019 TO JUL 30, 2019

Test Result Summary	
Test(s) Requested	Result(s)
EN 131-4:2007 Excluding the material requirement of Aluminium – alloy in EN 131-2, Clause 4.2.1	PASS
<b>Remark:</b> 1. This declaration of conformity is only based on the result of this laboratory activity, the impact of the uncertainty of the results was not included. 2. For further details, please refer to the following page(s).	

Signed for and on behalf of  
SGS-CSTC Co., Ltd. Anji Branch




AJHL1906001643BM

David Fan  
Approved Signatory



Unless otherwise agreed in writing, this document is issued by the Company subject to its General Conditions of Service printed overleaf, available on request or accessible at <http://www.sgs.com/en/Terms-and-Conditions.aspx> and, for electronic format documents, subject to Terms and Conditions for Electronic Documents at <http://www.sgs.com/en/Terms-and-Conditions/Terms-e-Documents.aspx>. Attention is drawn to the limitation of liability, indemnification and jurisdiction issues defined therein. Any holder of this document is advised that information contained hereon reflects the Company's findings at the time of its intervention only and within the limits of Client's instructions, if any. The Company's sole responsibility is to its Client and this document does not exonerate parties to a transaction from exercising all their rights and obligations under the transaction documents. This document cannot be reproduced except in full, without prior written approval of the Company. Any unauthorized alteration, forgery or falsification of the content or appearance of this document is unlawful and offenders may be prosecuted to the fullest extent of the law. Unless otherwise stated the results shown in this test report refer only to the sample(s) tested and such sample(s) are retained for 30 days only.

Attention: To check the authenticity of testing / inspection report & certificate, please contact us at telephone: (86-755) 8307 1443, or email: CN.Doccheck@sgs.com  
 No. 301, Sunlight Road, 2 Block, Sunlight Industry Zone, Anji County, Zhejiang Province, China 313300 t (86-572) 5018825 f (86-572) 5018829 www.sgs.com  
 中国·浙江·安吉县阳光工业园二区阳光大道301号 邮编: 313300 t (86-572) 5018825 f (86-572) 5018829 e sgs.china@sgs.com

**Test Conducted:** EN 131-4:2007 Ladders – Part 4: Single or multiple hinge-joint ladders  
**Norm Reference:** EN 131-1:2007 Ladders – Part 1: Terms, types, functional sizes  
 EN 131-2:2010 +A1:2017 Ladders – Part 2: Requirements, testing, marking  
 EN 131-3:2018 Ladders – Part 3: User instructions

**General Information for Test:**

The requirements are based upon a maximum total load of 150 kg.  
 Hinge-joint ladders are determined to be used by one person at a time.

**Result of Functional Dimensions (Test Conducted: EN 131-4 and EN 131-1):**

Test Item	Norm reference	Result
Leaning rung ladders	EN 131-1, 4.2	PASS
Standing rung ladders	EN 131-1, 4.3	PASS
Combination ladders	EN 131-1, 4.4	NA
Leaning step ladders	EN 131-1, 4.5	NA
Standing step ladders	EN 131-1, 4.6	NA
Standing rung and step ladder	EN 131-1, 4.7	NA
Hinged ladders in “platform” position	EN 131-4, 4.3	NA
Hinged ladders in “stand-off” position	EN 131-4, 4.4	NA

**Result of Test (Test Conducted: EN 131-4 and EN 131-2, for ladders hinged in the longitudinal direction):**

Test Item	Test Principles / Requirements	Result
General (EN 131-4, 5.1)	The requirements are based upon a maximum total load of 150 kg. Hinge-joint ladders are determined to be used by one person at a time.	/
Decking component (EN 131-4, 5.2)	If supplied, the decking component shall be secured against unintentional movement and shall have an antiskid working surface. It shall be designed so as to be unable to slip and tilt on the ladder.	NA
Ladder hinged in the longitudinal direction (EN 131-4, 5.3)	The ladder shall have at least one fixed lockable position for utilisation.	PASS
Ladder strength test (EN 131-4, 6.2.2)	The permanent deformation $f$ of the ladder shall not exceed 0.2 % of the distance $l$ between the supports. For standing ladders, the test load $F$ shall be determined by the equation $F = 2\ 600\ N \times \cos\ \alpha$ where $\alpha$ = manufacturer’s designed angle of use (Permitted angle: min 60°, max. 70°)	PASS



Unless otherwise agreed in writing, this document is issued by the Company subject to its General Conditions of Service printed overleaf, available on request or accessible at <http://www.sgs.com/en/Terms-and-Conditions.aspx> and, for electronic format documents, subject to Terms and Conditions for Electronic Documents at <http://www.sgs.com/en/Terms-and-Conditions/Terms-e-Documents.aspx>. Attention is drawn to the limitation of liability, indemnification and jurisdiction issues defined therein. Any holder of this document is advised that information contained hereon reflects the Company’s findings at the time of its intervention only and within the limits of Client’s instructions, if any. The Company’s sole responsibility is to its Client and this document does not exonerate parties to a transaction from exercising all their rights and obligations under the transaction documents. This document cannot be reproduced except in full, without prior written approval of the Company. Any unauthorized alteration, forgery or falsification of the content or appearance of this document is unlawful and offenders may be prosecuted to the fullest extent of the law. Unless otherwise stated the results shown in this test report refer only to the sample(s) tested and such sample(s) are retained for 30 days only.  
 Attention: To check the authenticity of testing / inspection report & certificate, please contact us at telephone: (86-755) 8307 1443, or email: CN.Doccheck@sgs.com  
 No. 301, Sunlight Road, 2 Block, Sunlight Industry Zone, Anji County, Zhejiang Province, China 313300 t (86-572) 5018825 f (86-572) 5018829 www.sgs.com.cn  
 中国·浙江·安吉县阳光工业园二区阳光大道301号 邮编:313300 t (86-572) 5018825 f (86-572) 5018829 e sgs.china@sgs.com

Test Item	Test Principles / Requirements	Result
Bending test of the stiles (EN 131-2, 5.3)	A test load $F$ of 750 N shall be applied vertically on the centre of the ladder for at least 1 min. The maximum permissible deflection $f_{max}$ as a function of the distance $l$ between the supports shall be: $f_{max} = 5 \times l^2 \times 10^{-6}$ mm for ladders of length less than or equal to 5 m; $f_{max} = 0.043 \times l - 90$ mm for ladders of length more than 5 m and less than or equal to 12 m; $f_{max} = 0.06 \times l - 294$ mm for ladders of length more than 12 m	PASS
Lateral deflection test of the ladder (EN 131-2, 5.4)	A load $F$ of 250 N shall be applied to the lower stile equidistant from the supports. The maximum permissible deflection $f_{max}$ as a function of the distance $l$ between the supports shall be: $f_{max} = 0.005 l$ , in millimetres	PASS
Bottom stile ends test (EN 131-2, 5.5)	A vertical force $F$ of 1100 N is placed in the middle of the load block and is maintained for one min. The test is repeated on the lower stile and on supporting legs. The permanent deflection $f$ in each test shall not exceed 2 mm. Neither fracture nor visible cracks are allowed.	PASS
Vertical load on rungs and steps (EN 131-2, 5.6.2)	A test load $F$ of 2600 N shall be applied vertically on the midpoint of the rung or step evenly distributed over a width of 100 mm and a depth equal to the rung/step for one min. The maximum permanent deformation after removal of the test load shall be less than or equal to 0.5 % of the inner width $b_1$ .	PASS
Vertical load on platforms (EN 131-2, 5.6.3)	A test load $F$ of 2600 N, uniformly distributed over an area of 100 mm $\times$ 100 mm shall be applied for one min. The maximum permanent deformation after removal of each test load shall be less than or equal to 0.5 % of the inner width $b_1$ . After the second test no permanent deformation greater than 0.5 % of $b_1$ is visible at the connection between platform and stile measured from the underside.	NA
Torsion test of rungs and steps (EN 131-2, 5.7)	A torque $M$ of 50 Nm shall be applied on the midpoint of the rung or step. The torque shall be applied alternately 10 times in clockwise and 10 times in counterclockwise direction for 10 s. There shall be no relative movement in the connection between stile and rung/step. After the test a permanent deformation shall be 1° at maximum with a tolerance of $\pm 0.2^\circ$ .	PASS
Test of opening restraints and hinges of standing ladders (bilaterally ascendable ladder) (EN 131-2, 5.8.2)	Test load $F$ of 2600 N is divided into two loads of 1300 N, shall be applied to the uppermost rung or step close to the stiles for 1 min. This test is then repeated on the other leg. No visible permanent deformation shall occur on the hinge joints, opening restraint devices and their attachments. The ladder shall not show any visible damages.	PASS



Unless otherwise agreed in writing, this document is issued by the Company subject to its General Conditions of Service printed overleaf, available on request or accessible at <http://www.sgs.com/en/Terms-and-Conditions.aspx> and, for electronic format documents, subject to Terms and Conditions for Electronic Documents at <http://www.sgs.com/en/Terms-and-Conditions/Terms-e-Documents.aspx>. Attention is drawn to the limitation of liability, indemnification and jurisdiction issues defined therein. Any holder of this document is advised that information contained hereon reflects the Company's findings at the time of its intervention only and within the limits of Client's instructions, if any. The Company's sole responsibility is to its Client and this document does not exonerate parties to a transaction from exercising all their rights and obligations under the transaction documents. This document cannot be reproduced except in full, without prior written approval of the Company. Any unauthorized alteration, forgery or falsification of the content or appearance of this document is unlawful and offenders may be prosecuted to the fullest extent of the law. Unless otherwise stated the results shown in this test report refer only to the sample(s) tested and such sample(s) are retained for 30 days only.  
Attention: To check the authenticity of testing / inspection report & certificate, please contact us at telephone: (86-755) 8307 1443, or email: CN.Doccheck@sgs.com  
No. 301, Sunlight Road, 2 Block, Sunlight Industry Zone, Anji County, Zhejiang Province, China 313300 t (86-572) 5018825 f (86-572) 5018829 www.sgs.com.cn  
中国·浙江·安吉县阳光工业园二区阳光大道301号 邮编:313300 t (86-572) 5018825 f (86-572) 5018829 e sgs.china@sgs.com

Test Item	Test Principles / Requirements	Result
Test of opening restraints and hinges of standing ladders (standing ladder with platform) (EN 131-2, 5.8.3)	Test load $F$ of 2600 N is divided into two loads of 1300 N, shall be applied to front edge of the platform close to the stiles for 1 min. This test is then repeated on the rear edge of the platform. No visible permanent deformation shall occur on the hinge joints, opening restraint devices and their attachments. The ladder shall not show any visible damages.	NA
Test of opening restraints and hinges of standing ladders (unilaterally ascendable ladder) (EN 131-2, 5.8.4)	Test load $F$ of 2600 N is divided into two loads of 1300 N, shall be applied to the uppermost rung or step of the ascending leg close to the stiles for 1 min. No visible permanent deformation shall occur on the hinge joints, opening restraint devices and their attachments. The ladder shall not show any visible damages.	NA
Test for ladder rung/step hooks of extending ladders and combination ladders (EN 131-2, 5.9)	A uniformly distributed test load $F$ of 3500 N shall be applied vertically to the upper part of the ladder for a period of 1 min. After removal of the test load, there shall be no permanent deformation which impairs the fitness for use of the ladder.	NA
Feet pull test (for ladder feet made of one part) (EN 131-2, 5.11.1)	A load of 150 N shall be applied for 1 min in a direction most likely to separate the foot from the stile. After the test, the foot shall remain functional and show a separation from the stile of less than or equal to 4 mm.	PASS
Feet pull test (for feet made of one part on stabilizer bars supplied by the ladder manufacturer) (EN 131-2, 5.11.2)	A load of 150 N shall be applied for 1 min in the position and direction most likely to separate the foot from the stabilizer bar. After the test, the foot shall remain functional and show a movement from its original position of less than or equal to 4 mm.	NA
Feet pull test (for ladder feet and feet of stabilizer bars made of more than one part) (EN 131-2, 5.11.3)	The section of the foot shall have a load of 150 N applied for 1 min in the most critical location and direction. There shall be no indication of separation between the different parts of the foot. If the sections of the ladder foot are loosened or lost, this shall be clearly visible when use. When these sections are worn through, this shall also be visible. The sections of the ladder foot shall be the only part of the foot in contact with the ground. This part of the ladder foot, even when worn, shall not be capable of being pushed inside the upper part of the foot when use.	NA
Torsion on ladder length (prEN 131-2:2006, 5.15)	Apply a test torque of 130 Nm in the same direction as the preload torque of 65 Nm. Apply a second test torque of 130 Nm in the same direction as the second preload torque of 65 Nm, in opposite direction to the first test load. The angle of twist shall not exceed: Maximum allowable angle = $(c \times l) / 2\ 000 = // 111$ where $c$ is the allowable twist ( $18^\circ$ ); $l$ is the test span, in millimeters	PASS
Cyclic test of hinge joint (EN 131-4, 6.2.3)	Automatic locking function shall operate with no manual intervention for 4000 cycles. Hinge joints shall withstand the cyclic tests.	PASS



Unless otherwise agreed in writing, this document is issued by the Company subject to its General Conditions of Service printed overleaf, available on request or accessible at <http://www.sgs.com/en/Terms-and-Conditions.aspx> and, for electronic format documents, subject to Terms and Conditions for Electronic Documents at <http://www.sgs.com/en/Terms-and-Conditions/Terms-e-Documents.aspx>. Attention is drawn to the limitation of liability, indemnification and jurisdiction issues defined therein. Any holder of this document is advised that information contained hereon reflects the Company's findings at the time of its intervention only and within the limits of Client's instructions, if any. The Company's sole responsibility is to its Client and this document does not exonerate parties to a transaction from exercising all their rights and obligations under the transaction documents. This document cannot be reproduced except in full, without prior written approval of the Company. Any unauthorized alteration, forgery or falsification of the content or appearance of this document is unlawful and offenders may be prosecuted to the fullest extent of the law. Unless otherwise stated the results shown in this test report refer only to the sample(s) tested and such sample(s) are retained for 30 days only.  
Attention: To check the authenticity of testing / inspection report & certificate, please contact us at telephone: (86-755) 8307 1443, or email: CN.Doccheck@sgs.com

No. 301, Sunlight Road, 2 Block, Sunlight Industry Zone, Anji County, Zhejiang Province, China 313300 t (86-572) 5018825 f (86-572) 5018829 www.sgs.com.cn  
中国·浙江·安吉县阳光工业园二区阳光大道301号 邮编:313300 t (86-572) 5018825 f (86-572) 5018829 e sgs.china@sgs.com

Test Item	Test Principles / Requirements	Result
Test of the ladder in the platform position (strength test of the decking component) (EN 131-4, 6.2.4.2)	Deformation under 1000 N load shall be less than or equal to 1 % of the decking component length. Residual deformation shall be less than or equal to 0.1 % of the decking component length.	NA
Test of the ladder in the platform position (safety test of the ladder) (EN 131-4, 6.2.4.3)	Deformation under 1.5 times the maximum load shall be less than or equal to 2 % of the assembly of decking components length. The product shall remain functional after conducting 2 times the maximum total load test.	NA
Stability test of the ladder (EN 131-4, 6.2.4.4)	Apply a load of 750 N distributed over 200 mm × 200 mm located on the side of the decking component. A horizontal force <i>F</i> of 300 N shall be applied to the decking component in the most unfavourable direction. The ladder shall not topple.	NA
Test of decking component sliding (EN 131-4, 6.2.4.5)	A horizontal force of 300 N shall be attached alternatively to the middle of each side of the decking component. Movement of the decking component shall not exceed 5 mm in the lateral direction. The decking component may move slightly but the stop positions shall conform to the limits of <i>h</i> <sub>0</sub> in the lengthwise direction and the overhang in the lateral direction shall not be more than 25 mm on each side in accordance with 4.3.	NA

**Result of Material, Marking, User Instruction (Test Conducted: EN 131-4, EN 131-2 and EN 131-3):**

Test Item	Test Principles / Requirements	Result
Aluminium – alloy (EN 131-2, 4.2.1)	All load bearing parts made of aluminium alloy shall have an elongation <i>A</i> <sub>s</sub> at rupture measured according to EN ISO 6892-1 of minimum 5 %. All load bearing parts made of aluminium alloy shall have a thickness of at least 1.2 mm.	NT
Steel (EN 131-2, 4.2.2)	If cold rolled steel or a special alloy-steel is used the ratio between 0.2 % yield-stress and ultimate strength ( <i>R</i> <sub>p</sub> 0.2/ <i>R</i> <sub>m</sub> ) shall be lower than 0.92. All load bearing parts made of steel shall have a thickness of at least 1.0 mm.	NA



Unless otherwise agreed in writing, this document is issued by the Company subject to its General Conditions of Service printed overleaf, available on request or accessible at <http://www.sgs.com/en/Terms-and-Conditions.aspx> and, for electronic format documents, subject to Terms and Conditions for Electronic Documents at <http://www.sgs.com/en/Terms-and-Conditions/Terms-e-Documents.aspx>. Attention is drawn to the limitation of liability, indemnification and jurisdiction issues defined therein. Any holder of this document is advised that information contained hereon reflects the Company's findings at the time of its intervention only and within the limits of Client's instructions, if any. The Company's sole responsibility is to its Client and this document does not exonerate parties to a transaction from exercising all their rights and obligations under the transaction documents. This document cannot be reproduced except in full, without prior written approval of the Company. Any unauthorized alteration, forgery or falsification of the content or appearance of this document is unlawful and offenders may be prosecuted to the fullest extent of the law. Unless otherwise stated the results shown in this test report refer only to the sample(s) tested and such sample(s) are retained for 30 days only.  
Attention: To check the authenticity of testing / inspection report & certificate, please contact us at telephone: (86-755) 8307 1443, or email: CN.Doccheck@sgs.com

No. 301, Sunlight Road, 2 Block, Sunlight Industry Zone, Anji County, Zhejiang Province, China 313300 t (86-572) 5018825 f (86-572) 5018829 www.sgs.com.cn  
中国·浙江·安吉县阳光工业园二区阳光大道301号 邮编: 313300 t (86-572) 5018825 f (86-572) 5018829 e sgs.china@sgs.com

Test Item	Test Principles / Requirements	Result
Plastics (EN 131-2, 4.2.3)	<p>Glass-fibre reinforced plastics shall be protected against penetration of water and dirt. The surface shall be smooth. The fibres shall be embedded. The Barcol hardness according to EN 59 shall be at least 35.</p> <p>The test methods and acceptance criteria for defining the characteristics of the composite and reinforced thermoplastic materials are given in 5.16. They apply to the load-bearing elements (stiles, climbing supports, platforms) of the structure of ladders at time of use. Thermoplastic materials without reinforcements shall not be used for load bearing-elements. The minimum thickness for load-bearing elements made of thermoset plastics and composite material is 2 mm.</p> <p>When using plastics materials, ageing and temperature resistance shall be taken into account.</p>	NA
Timber (EN 131-2, 4.2.4)	Timber shall meet requirements in EN 131-2 clause 4.2.4.	NA
Marking (EN 131-4, 7)	<p>Ladders shall meet the marking requirements of EN 131-2 with the following additional text:</p> <p>Prohibited positions shall be shown with a visually attached pictogram or text. Marking shall indicate the possible level adjust position(s). Maximum platform weight to be specified.</p>	PASS
User instructions (EN 131-4, 8)	User instruction in accordance with EN 131-3 shall be provided.	PASS

**Remark:**

- 1. NA = Not applicable, NT= Not tested



Unless otherwise agreed in writing, this document is issued by the Company subject to its General Conditions of Service printed overleaf, available on request or accessible at <http://www.sgs.com/en/Terms-and-Conditions.aspx> and, for electronic format documents, subject to Terms and Conditions for Electronic Documents at <http://www.sgs.com/en/Terms-and-Conditions/Terms-e-Documents.aspx>. Attention is drawn to the limitation of liability, indemnification and jurisdiction issues defined therein. Any holder of this document is advised that information contained hereon reflects the Company's findings at the time of its intervention only and within the limits of Client's instructions, if any. The Company's sole responsibility is to its Client and this document does not exonerate parties to a transaction from exercising all their rights and obligations under the transaction documents. This document cannot be reproduced except in full, without prior written approval of the Company. Any unauthorized alteration, forgery or falsification of the content or appearance of this document is unlawful and offenders may be prosecuted to the fullest extent of the law. Unless otherwise stated the results shown in this test report refer only to the sample(s) tested and such sample(s) are retained for 30 days only.

Attention: To check the authenticity of testing / inspection report & certificate, please contact us at telephone: (86-755) 8307 1443, or email: CN.Doccheck@sgs.com

SGS-CSTC (Shanghai) Technical Services Co., Ltd.  
Anji Branch Harbin

No. 301, Sunlight Road, 2 Block, Sunlight Industry Zone, Anji County, Zhejiang Province, China 313300 t (86-572) 5018825 f (86-572) 5018829 www.sgs.com.cn  
中国·浙江·安吉县阳光工业园二区阳光大道301号 邮编:313300 t (86-572) 5018825 f (86-572) 5018829 e sgs.china@sgs.com

Photo Appendix



Sample as received - View 1



Sample as received - View 2



Sample as received - View 3



Sample as received - View 4



Sample as received - View 5



Sample as received - View 6



SGS-CSTC 浙江安吉阳光检测技术有限公司  
Anji Branch Harbin

Unless otherwise agreed in writing, this document is issued by the Company subject to its General Conditions of Service printed overleaf, available on request or accessible at <http://www.sgs.com/en/Terms-and-Conditions.aspx> and, for electronic format documents, subject to Terms and Conditions for Electronic Documents at <http://www.sgs.com/en/Terms-and-Conditions/Terms-e-Documents.aspx>. Attention is drawn to the limitation of liability, indemnification and jurisdiction issues defined therein. Any holder of this document is advised that information contained hereon reflects the Company's findings at the time of its intervention only and within the limits of Client's instructions, if any. The Company's sole responsibility is to its Client and this document does not exonerate parties to a transaction from exercising all their rights and obligations under the transaction documents. This document cannot be reproduced except in full, without prior written approval of the Company. Any unauthorized alteration, forgery or falsification of the content or appearance of this document is unlawful and offenders may be prosecuted to the fullest extent of the law. Unless otherwise stated the results shown in this test report refer only to the sample(s) tested and such sample(s) are retained for 30 days only.

Attention: To check the authenticity of testing / inspection report & certificate, please contact us at telephone: (86-755) 8307 1443, or email: CN.Doccheck@sgs.com

No. 301, Sunlight Road, 2 Block, Sunlight Industry Zone, Anji County, Zhejiang Province, China 313300 t (86-572) 5018825 f (86-572) 5018829 www.sgsgroup.com.cn  
中国·浙江·安吉县阳光工业园二区阳光大道301号 邮编:313300 t (86-572) 5018825 f (86-572) 5018829 e sgs.china@sgs.com



Sample as received - View 7



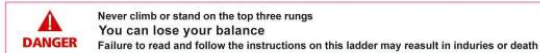
Sample as received - View 8



Sample as received - View 9



Label 1



Label 2

- a) Producer: YongKang Aoyi Industry and Trade Co.,Ltd  
Address: Longshan Industrial Zone, Yongkang City, Zhejiang province, China
- B) Type of ladder: Aluminium Multi-purpose Ladder
- c) Month and Year of Production: 20190615  
Serial Number: AY-605A
- d) Set the ladder at proper 75 degree angle by bracing ladder base a distance equal to 1/4 of total working length of ladder.
- e) Maximum total load: 150KG
- f) Maximum number of users allowed on the ladder: 1 Person
- g) Weight of the ladder after production: 14.50kg
- h) Non-insulated ladder

Label 3

SGS authenticate the photo on original report only



Unless otherwise agreed in writing, this document is issued by the Company subject to its General Conditions of Service printed overleaf, available on request or accessible at <http://www.sgs.com/en/Terms-and-Conditions.aspx> and, for electronic format documents, subject to Terms and Conditions for Electronic Documents at <http://www.sgs.com/en/Terms-and-Conditions/Terms-e-Document.aspx>. Attention is drawn to the limitation of liability, indemnification and jurisdiction issues defined therein. Any holder of this document is advised that information contained hereon reflects the Company's findings at the time of its intervention only and within the limits of Client's instructions, if any. The Company's sole responsibility is to its Client and this document does not exonerate parties to a transaction from exercising all their rights and obligations under the transaction documents. This document cannot be reproduced except in full, without prior written approval of the Company. Any unauthorized alteration, forgery or falsification of the content or appearance of this document is unlawful and offenders may be prosecuted to the fullest extent of the law. Unless otherwise stated the results shown in this test report refer only to the sample(s) tested and such sample(s) are retained for 30 days only.  
Attention: To check the authenticity of testing / inspection report & certificate, please contact us at telephone: (86-755) 8307 1443, or email: CN.Doccheck@sgs.com  
No. 301, Sunlight Road, 2 Block, Sunlight Industry Zone, Anji County, Zhejiang Province, China 313300 t (86-572) 5018825 f (86-572) 5018829 www.sgs.com.cn  
中国·浙江·安吉县阳光工业园区二区阳光大道301号 邮编:313300 t (86-572) 5018825 f (86-572) 5018829 e sgs.china@sgs.com

### User instructions:

#### ALUMINUM MULTI-PURPOSE LADDER

#### Users Safety Instructions

- In order to insure your safety, please read this user instruction manual carefully.
- Keep manual for future reference

EN131-3

#### Using the Hinge Locking Mechanism:

- Always make sure that all ladder hinges are in the locked position before using it.
- Each pair of hinges must be locked simultaneously.

#### Process:

-Pull out the unlocking levers to release a pair of hinges so that locking pin is in the "O" position (not locked).  
 -Fold the relevant sections of the ladder to form the position that you require, the hinge will automatically "snap" into position at certain angles and the locking pin is in the "L" position (locked). Caution!  
 The hinge may appear to audibly "click" into position, but always visually check that the locking indicator shows the hinge to fully locked.



#### Attention:



-Please take care of yourself when you are using this ladder and avoid to fall from the ladder.



-Please read this user safety instruction carefully before you are using this ladder.



-Inspect the ladder after delivery  
 -Do not use a damaged ladder. Before every use, please visually check the ladder is safe and not damaged.



-The maximum total load is 150kg, please do not over load.



-Do not overreach



-Do not erect ladder on contaminated ground



-Maximum number of users



-Do not ascend or descend unless you are facing the ladder



-Keep a secure grip on the ladder when ascending and descending. Maintain a handhold whilst working from ladder or take additional safety precautions if you cannot.



-Avoid work that sideways load on the ladders, such as side-on drilling through solid materials.



-Do not carry equipment which is heavy or difficult to handle while using a ladder.



-Do not wear unsuitable footwear when climbing the ladder.



-Do not use ladder if you are not fit enough. Certain medicine conditions or medication, alcohol or drug abuse could make ladder use unsafe.



-Electricity hazard  
 Identify any electrical risks in the work area, such as overhead lines or other exposed electrical equipment and do not use the ladder where electrical risks occur.



-Do not use the ladder as a bridge.



-If a ladder is delivered with stabilizer bars and these bars should be fixed by the user before the first use. This shall be described on the ladder and in the user instruction.



-Do not use the ladder on uneven or unfirm base.



Unless otherwise agreed in writing, this document is issued by the Company subject to its General Conditions of Service printed overleaf, available on request or accessible at <http://www.sgs.com/en/Terms-and-Conditions.aspx> and, for electronic format documents, subject to Terms and Conditions for Electronic Documents at <http://www.sgs.com/en/Terms-and-Conditions/Terms-e-Documents.aspx>. Attention is drawn to the limitation of liability, indemnification and jurisdiction issues defined therein. Any holder of this document is advised that information contained hereon reflects the Company's findings at the time of its intervention only and within the limits of Client's instructions, if any. The Company's sole responsibility is to its Client and this document does not exonerate parties to a transaction from exercising all their rights and obligations under the transaction documents. This document cannot be reproduced except in full, without prior written approval of the Company. Any unauthorized alteration, forgery or falsification of the content or appearance of this document is unlawful and offenders may be prosecuted to the fullest extent of the law. Unless otherwise stated the results shown in this test report refer only to the sample(s) tested and such sample(s) are retained for 30 days only.

Attention: To check the authenticity of testing / inspection report and certificate, please contact us at telephone: (86-755) 8307 1443, or email: CN.Doccheck@sgs.com



-Ladder for professional use



-Do not lean the ladder against unsuitable surfaces.



-Do not stand on the top three steps or rungs of a leaning ladder.



-Do not step off the side of standing ladder onto another surface.



-Any horizontal surface which looks like a platform on a standing ladder that is not designed for standing on.



-Open the ladder fully before use.



-leaning ladders with rungs shall be used at the correct angle.



-Use the ladder with restraint devices engaged only.



-leaning ladders with steps shall be used that the steps are in a horizontal position.



-Standing ladders shall not be used as a leaning ladder unless it is designed to do so.



-ladders used for access to a higher level shall be extended at least 1m above the landing point and secured, if necessary.



-Do not stand on the top two steps or rungs of a standing ladder without a platform and a hand or knee rail.



-Only use the ladder in the direction as indicated, only if necessary due to design of ladder.

-5-

-6-

### Cautions:

- ladder shall never be moved from the top.
- Do not spend long periods on a ladder without regular breaks (tiredness is a risk).
- Prevent damage of the ladder when transportation e.g. by fastening and ensure they are suitably placed to prevent damage.
- Ensure the ladder is suitable for the task.
- Do not use the ladder if contaminated, e.g. with wet paint, mud, oil or snow.
- Do not use the ladder outside in adverse weather conditions, such as strong wind.
- For professional use a risk assessment shall be carried out respecting the legislation in the country of use.
- When positioning the ladder take into account risk of collision with the ladder e.g. from pedestrians, vehicles or doors. Secure doors and windows where possible in the work area.
- Use non-conductive ladders for unavoidable live electrical work.
- Do not modify the ladder design.
- Do not move a ladder while standing on it.
- For outdoor use caution to the wind.



-If the ladder is used as a platform, only decking recommended by the ladder producer shall be used. The decking shall be secured before use.



-Prohibited positions: M-position, upside-down position..



-Max load of platform in scaffold position declared by the manufacturer.



-Ensure that the hinges are locked.

-Single or multiple joint ladders should be unfolded/folded when lying on the ground and not in its use position.

### Professional



Unless otherwise agreed in writing, this document is issued by the Company subject to its General Conditions of Service printed overleaf, available on request or accessible at <http://www.sgs.com/en/Terms-and-Conditions.aspx> and, for electronic format documents, subject to Terms and Conditions for Electronic Documents at <http://www.sgs.com/en/Terms-and-Conditions/Terms-e-Documents.aspx>. Attention is drawn to the limitation of liability, indemnification and jurisdiction issues defined therein. Any holder of this document is advised that information contained hereon reflects the Company's findings at the time of its intervention only and within the limits of Client's instructions, if any. The Company's sole responsibility is to its Client and this document does not exonerate parties to a transaction from exercising all their rights and obligations under the transaction documents. This document cannot be reproduced except in full, without prior written approval of the Company. Any unauthorized alteration, forgery or falsification of the content or appearance of this document is unlawful and offenders may be prosecuted to the fullest extent of the law. Unless otherwise stated the results shown in this test report refer only to the sample(s) tested and such sample(s) are retained for 30 days only.

Attention: To check the authenticity of testing / inspection report & certificate, please contact us at telephone: (86-755) 8307 1443, or email: CN.Doccheck@sgs.com

No. 301, Sunlight Road, 2 Block, Sunlight Industry Zone, Anji County, Zhejiang Province, China 313300 t (86-572) 5018825 f (86-572) 5018829 www.sgs.com.cn  
 中国·浙江·安吉县阳光工业园二区阳光大道301号 邮编:313300 t (86-572) 5018825 f (86-572) 5018829 e sgs.china@sgs.com

### Repair & Maintenance:

- 1.Repair and maintenance shall be carried out by the competent person and be in accordance with the user instruction.
- 2.For repair and replacement of parts,e.g. feet,if necessary,contact with the producer or distributor.
- 3.The hinge should be lubricated with a good quality lubricant to ensure mobility.
- 4.The hinge should be cleaned after use especially when the hinges have been subjected to dust or dirt.
- 5.Clean the area or wash with warm water. And re-lubricated the hinges after drying.



Producer name:Yongkang aoyi industry & trade co.,ltd  
Address:Longshan industrial zone,yongkang city,zhejiang province,China

### Storage:

- 1.After using the ladder,you'd better to fold it and then pack it back.
- 2.Try to lubricate the hinges at a period of time.
- 3.Try to keep the ladder inside the house when you do not use it.



SGS-CSTC Anji Branch Harbin  
Anji Branch Harbin

Unless otherwise agreed in writing, this document is issued by the Company subject to its General Conditions of Service printed overleaf, available on request or accessible at <http://www.sgs.com/en/Terms-and-Conditions.aspx> and, for electronic format documents, subject to Terms and Conditions for Electronic Documents at <http://www.sgs.com/en/Terms-and-Conditions/Terms-e-Document.aspx>. Attention is drawn to the limitation of liability, indemnification and jurisdiction issues defined therein. Any holder of this document is advised that information contained hereon reflects the Company's findings at the time of its intervention only and within the limits of Client's instructions, if any. The Company's sole responsibility is to its Client and this document does not exonerate parties to a transaction from exercising all their rights and obligations under the transaction documents. This document cannot be reproduced except in full, without prior written approval of the Company. Any unauthorized alteration, forgery or falsification of the content or appearance of this document is unlawful and offenders may be prosecuted to the fullest extent of the law. Unless otherwise stated the results shown in this test report refer only to the sample(s) tested and such sample(s) are retained for 30 days only.  
Attention: To check the authenticity of testing / inspection report & certificate, please contact us at telephone:(86-755) 8307 1443, or email: CN.Doccheck@sgs.com

No. 301, Sunlight Road, 2 Block, Sunlight Industry Zone, Anji County, Zhejiang Province, China 313300 t (86-572) 5018825 f (86-572) 5018829 www.sgs.com  
中国·浙江·安吉县阳光工业园二区阳光大道301号 邮编:313300 t (86-572) 5018825 f (86-572) 5018829 e sgs.china@sgs.com

## User Instruction

### Before Use

- a) Ensure that you are fit enough to use a ladder. Certain medical conditions or medication, alcohol or drug abuse could make ladder use unsafe.
- b) When transporting ladders on roof bars or in a truck, ensure they are suitably placed to prevent damage.
- c) Inspect the ladder after delivery and before first use to confirm condition and operation of all parts.
- d) Visually check the ladder is not damaged and is safe to use at the start of each working day when the ladder is to be used.
- e) For professional users regular periodic inspection is required.
- f) Ensure the ladder is suitable for the task.
- g) Don not use a damaged ladder.
- h) Remove any contamination from the ladder, such as wet paint, mud, oil or snow.
- i) Before using a ladder at work a risk assessment should be carried out respecting the legislation in the country of use.

### Positioning and erecting the ladder

- a) Ladder shall be erected at the correct position, such as the correct angle for a leaning ladder (angle of inclination approximately 1:4) with the rungs or treads level and complete opening of a standing ladder.
- b) Locking devices, if fitted, shall be fully secured before use.
- c) Ladder shall be on an even, level and unmoveable base.
- d) Leaning ladder should lean against a flat non-fragile surface and should be secured before use, e.g. tied or use of a suitable stability device.
- e) Ladder shall never be repositioned from above.
- f) When positioning the ladder take into account risk of collision with the ladder e.g. from pedestrians, vehicles or doors. Secure doors (not fire exists) and windows where possible in the work area.
- g) Identify and electrical risks in the work area, such as overhead lines or other exposed electrical equipment.
- h) Ladder shall be stood on its feet, not the rungs or steps.
- i) Ladders shall not be positioned on slippery surface (such as ice, shiny surface



Unless otherwise agreed in writing, this document is issued by the Company subject to its General Conditions of Service printed overleaf, available on request or accessible at <http://www.sgs.com/en/Terms-and-Conditions.aspx> and, for electronic format documents, subject to Terms and Conditions for Electronic Documents at <http://www.sgs.com/en/Terms-and-Conditions/Terms-e-Document.aspx>. Attention is drawn to the limitation of liability, indemnification and jurisdiction issues defined therein. Any holder of this document is advised that information contained hereon reflects the Company's findings at the time of its intervention only and within the limits of Client's instructions, if any. The Company's sole responsibility is to its Client and this document does not exonerate parties to a transaction from exercising all their rights and obligations under the transaction documents. This document cannot be reproduced except in full, without prior written approval of the Company. Any unauthorized alteration, forgery or falsification of the content or appearance of this document is unlawful and offenders may be prosecuted to the fullest extent of the law. Unless otherwise stated the results shown in this test report refer only to the sample(s) tested and such sample(s) are retained for 30 days only.

Attention: To check the authenticity of testing / inspection report & certificate, please contact us at telephone: (86-755) 8307 1443, or email: CN.Doccheck@sgs.com

SGS-CSTC (Shanghai) Technical Services Co., Ltd.  
Anji Branch Harbin

No. 301, Sunlight Road, 2 Block, Sunlight Industry Zone, Anji County, Zhejiang Province, China 313300 t (86-572) 5018825 f (86-572) 5018829 www.sgs.com.cn  
中国·浙江·安吉县阳光工业园二区阳光大道301号 邮编:313300 t (86-572) 5018825 f (86-572) 5018829 e sgs.china@sgs.com

or significantly contaminated solid surfaces) unless additional effective measures are taken to prevent the ladder slipping or ensuring contaminated surfaces are sufficiently clean.

**Using the ladder**

- a) Do not exceed the maximum total load for the type of ladder.
- b) Do not overreach, user should keep their belt buckle (navel) inside the stiles and both feet on the same step/rung throughout the task.
- c) Do not step off leaning ladder at a higher level without additional security, such as tying off or use of a suitable stability device.
- d) Do not use standing ladders for access to another level.
- e) Do not stand on the top three steps/rungs of a leaning ladder.
- f) Do not stand on the top two steps/rungs of a standing ladder without a platform and hand/knee rail.
- g) Do not stand on the top four steps/rungs of a standing ladder with an extending ladder at the top.
- h) Ladders should only be used for light work of short duration.
- i) Use non-conductive ladders for unavoidable live electrical work.
- j) Do not use the ladder outside in advance weather conditions, such as strong wind.
- k) Take precautions against children playing on the ladder.
- l) Secure doors (not fire exits) and windows where possible in the work area.
- m) Face the ladder when ascending and descending.
- n) Keep a secure grip on the ladder when ascending and descending.
- o) Do not use the ladder as a bridge.
- p) Wear suitable footwear when climbing a ladder.
- q) Avoid excessive side loading e.g. drilling brick and concrete.
- r) Do not spend long periods on a ladder without regular breaks (tiredness is a risk)
- s) Leaning ladder used for access to a higher level should be extended at least 1m above the landing pint.
- t) Equipment carried while using a ladder should be light and easy to handle.
- u) Avoid work that imposes a sideways load on standing ladders, such as side-drilling through solid materials (e.g. brick or concrete)
- v) Maintain a handhold whilst working from a ladder or take additional safety precautions if you cannot.

**Repair, maintenance and storage**

Repairs and maintenance shall be carried out by a competent person and be in accordance with the producer's instructions.

Always store the ladder with legs folded.



### Multi-function telescopic ladder USER GUIDE



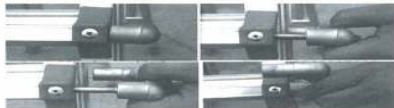
**EN131**

**MAX:150KG**

**IMPORTANT!** TO AVOID SERIOUS INJURY OR DEATH, READ ALL OF THESE INSTRUCTIONS AND OBSERVE ALL WARNING LABELS BEFORE USE! RETAIN MANUAL FOR FUTURE REFERENCE-

#### BEFORE USE: ATTACH THE STABILISER BARS

- Remove the transit protectors at each end of the ladder.
- Place the stabiliser bars into the ends of the side rails at each end of the ladder and secure with the nuts, bolts and washers provided (see diagram below.)
- DO NOT use the ladder without the stabiliser bars attached unless otherwise stated
- Always check that the stabiliser bars are secure before putting and weight on the ladder.
- Only use the stabiliser bars supplied.



#### USING THE HINGE LOCKING MECHANISM

- ALWAYS make sure that all the ladder hinges are in the locked position before using it
- Each pair of hinges must be locked simultaneously

#### PROCESS:

- Pull out the unlocking levers to release a pair of hinges so that the locking pin is in the "O" position (NOT LOCKED)
- Fold the relevant sections of the ladder to form the position that you require. The hinges will automatically 'snap' into position at certain angles, and the locking pin is in the 'L' position (LOCKED)



**CAUTION!** The hinges may appear to audibly 'click' into position, but always visually check that the locking indicator shows the hinge to fully locked

#### MULTI-PURPOSE LADDER POSITIONS

- Store out of reach of children.
- DO NOT attempt to use the ladder constructed in a position other than those illustrated here.



SGS-CSTC (Shanghai) Technical Services Co., Ltd.  
Anji Branch Harbin

Unless otherwise agreed in writing, this document is issued by the Company subject to its General Conditions of Service printed overleaf, available on request or accessible at <http://www.sgs.com/en/Terms-and-Conditions.aspx> and, for electronic format documents, subject to Terms and Conditions for Electronic Documents at <http://www.sgs.com/en/Terms-and-Conditions/Terms-e-Documents.aspx>. Attention is drawn to the limitation of liability, indemnification and jurisdiction issues defined therein. Any holder of this document is advised that information contained hereon reflects the Company's findings at the time of its intervention only and within the limits of Client's instructions, if any. The Company's sole responsibility is to its Client and this document does not exonerate parties to a transaction from exercising all their rights and obligations under the transaction documents. This document cannot be reproduced except in full, without prior written approval of the Company. Any unauthorized alteration, forgery or falsification of the content or appearance of this document is unlawful and offenders may be prosecuted to the fullest extent of the law. Unless otherwise stated the results shown in this test report refer only to the sample(s) tested and such sample(s) are retained for 30 days only.  
**Attention:** To check the authenticity of testing / inspection report & certificate, please contact us at telephone: (86-755) 8307 1443, or email: CN.Doccheck@sgs.com

No. 301, Sunlight Road, 2 Block, Sunlight Industry Zone, Anji County, Zhejiang Province, China 313300 t (86-572) 5018825 f (86-572) 5018829 www.sgs.com.cn  
中国·浙江·安吉县阳光工业园二区阳光大道301号 邮编:313300 t (86-572) 5018825 f (86-572) 5018829 e sgs.china@sgs.com

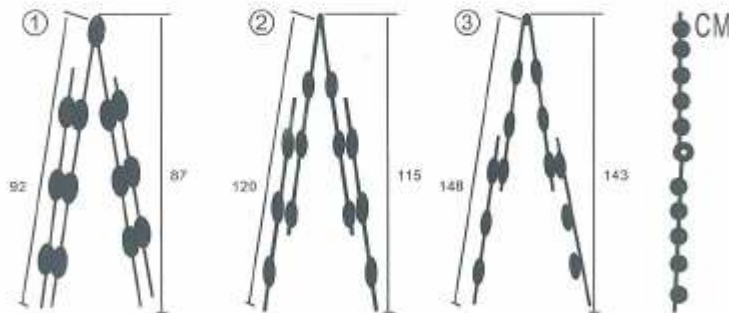
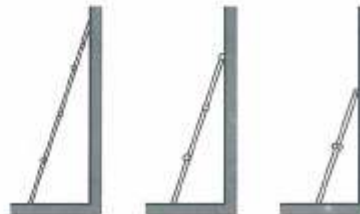
**STEPLADDER**

- NEVER stand in between the front and back sections (straddling).
- Never stand on or above the second rung from the top.



**STRAIGHT LADDER POSITIONS**

- NEVER stand on the top three runs.
- The ladder should be set at an angle of approximately 75 degrees.
- Take extra care when using the shorter positions, as the stabiliser bar is not in contact with the wall.



\*\*\*End of Report\*\*\*



Unless otherwise agreed in writing, this document is issued by the Company subject to its General Conditions of Service printed overleaf, available on request or accessible at <http://www.sgs.com/en/Terms-and-Conditions.aspx> and, for electronic format documents, subject to Terms and Conditions for Electronic Documents at <http://www.sgs.com/en/Terms-and-Conditions/Terms-e-Documents.aspx>. Attention is drawn to the limitation of liability, indemnification and jurisdiction issues defined therein. Any holder of this document is advised that information contained hereon reflects the Company's findings at the time of its intervention only and within the limits of Client's instructions, if any. The Company's sole responsibility is to its Client and this document does not exonerate parties to a transaction from exercising all their rights and obligations under the transaction documents. This document cannot be reproduced except in full, without prior written approval of the Company. Any unauthorized alteration, forgery or falsification of the content or appearance of this document is unlawful and offenders may be prosecuted to the fullest extent of the law. Unless otherwise stated the results shown in this test report refer only to the sample(s) tested and such sample(s) are retained for 30 days only.

Attention: To check the authenticity of testing / inspection report & certificate, please contact us at telephone: (86-755) 8307 1443, or email: CN.Doccheck@sgs.com

SGS-CSTC 安基检测技术有限公司  
Anji Branch Harbin

No. 301, Sunlight Road, 2 Block, Sunlight Industry Zone, Anji County, Zhejiang Province, China 313300 t (86-572) 5018825 f (86-572) 5018829 www.sgs.com  
中国·浙江·安吉县阳光工业园二区阳光大道301号 邮编:313300 t (86-572) 5018825 f (86-572) 5018829 e sgs.china@sgs.com